

The Preferences of Outdoor Communal Spaces on Campus of University of Sumatera Utara

Morida Siagian¹, Rudolf Sitorus¹, Firman Eddy¹

¹Department of Architecture, Faculty of Engineering, Universitas Sumatera Utara, Medan, Indonesia

Keywords: Student Campus, Campus Design, Preferences of Communal Space.

Abstract: The activity of the students in the campus area is highly used, namely formal and informal activities, indoor and outdoor space. Informal activities such as socializing, doing assignments, and study can be undertaken in the outdoor spaces on campus. At some points there are always a communal spaces that are provided by university but not in accordance with the preference of the student. Because of that procurements of space are not right on target. The outdoor communal spaces at the University of Sumatera Utara (USU) campus are spread over 91 points. Each has the characteristics and uniqueness that is preferred by students background. This paper finds pattern of student interaction preferences in outdoor spaces campus.

1 INTRODUCTION

The outdoor spaces in the campus area are always filled with many kinds of student activities. The increasing of student activities create the need for communal spaces. The activities are generally fixed on two activities, namely formal and informal activities. Those activities usually are done in indoor and outdoor spaces. Formal activities that take place in outdoor such attending the lecture, seminars, public lectures and doing the task of college are the main purpose of students come to campus. In the meantime, informal activities such as gathering and interacting take place in outdoor such as breezeways, parks, plazas and other outdoors.

The research done by Marcus and Wischemann (1983) in Marcus and Francis (1998) asserts a difference between indoor space and outdoor spaces. The indoor space is identically with the feeling of "closed", "boring", "frustrating", "nervous", while outdoor spaces more synonymous with the feeling of "calm", "silence", "relax", "peaceful", "green", and "comfortable."

In informal activities, students need the means to embody the activities and their social space requirements. The students prefer to gather under trees in open spaces. Many times, they use spaces that abused architecturally with the sit on the stairs, in the parking, on the floor and on the fence of campus.

This paper describes the behavioral preferences of students in outdoor spaces and describes the communal space availability in 15 faculties in University of Sumatera Utara (USU).

2 RESEARCH METHODOLOGY

This research was conducted with quantitative method in field observation. An observation of student activities in outdoor spaces is done in 15 faculty areas. Then the research finds and assigns 91 of point student communal spaces, then observe the level of hustle students at the specified points (Table 1). Observations are conducted daily from Monday to Friday, in the morning, afternoon and evening. In one week there are 15 times of observation student gathering in those points can be watched.

Data analysis is relying number of students assembled on 91 outdoor spaces. This research counts the number of students that place on days and hours vary in each Faculty then tabulates into whole campus to find pattern and preferences of students gathered.

Table 1: List of Faculty at University of Sumatera Utara.

No	Faculty	List of Departement	Communal Place
1	Faculty of Medichines	26	4
2	Faculty of Social Health	6	2
3	Faculty of Nurse	3	1
4	Faculty of dentistry	4	4
5	Faculty of Computer Science & Technology Information	2	5
6	Faculty of Culture Science	10	17
7	Faculty of Law	6	3
8	Faculty of Social and Political Science	7	4
9	Faculty of Economics	3	6
10	Faculty of Engineering	7	15
11	Faculty of Psychology	6	2
12	Faculty of Mathematics	4	6
13	Faculty of Pharmacy	4	7
14	Faculty of Forestry	1	4
15	Faculty of Agriculture	6	11
	Total	95*	91 points**

3 DISCUSSION

The campus of University of Sumatera Utara Medan is on 120 ha land (Figure 1). Academic zone are on 90 ha, 30 ha are for lecturer residence, hospital, and commercial spaces. USU became the 5th largest university in Indonesia after IPB, ITB, UGM, and UI. There are 15 faculties that have entirely features 95 departements (USU, 2016). Then there are also key building as an administrative centre, auditorium, library, and University student gymnasium.

USU has 53.065 students (USU, 2015). This makes the intensity of students at USU is very high. Certainly, it gives influence on space needs on this campus because of many activities that occur.

Campus is not designed with the centralized model, but separately with cell concept. This makes the planning process and the provision of spaces is determined by the direction of the individual faculty respectively. The result is that outdoor space design is unsynchronized. The space pattern is 15 sectoral system (Figure 1). At the same time, in some of the faculties, building groups are built based on zoning department. This forms create lack interactions between students and faculties and between each department; isolated interaction which forms a diverse individual space.

Cell concept planning system minimizes the students to know each other and to socialize between

them even between departement. The absence of the atmosphere of mutual visits or classroom between departement in faculty creates the interaction runs individually. Isolated interactions in the cell of each faculty and each departement forms diverse preferences for communal activites in each zone.

Students activities at the outdoor space accommodate their informal needs. With different backgrounds, hometowns, ethnics, and majors can gather together in the spaces.

Students interact they each other and create their own spaces on outdoor. The new spaces then create the bonds between groups of students for their needs together. In her research in Kampung Keling Siagian (2016), she also find the same phenomenon where the interaction between China and Tamil people create new spaces which therefor that can identity each group and the district.

USU provides communal spaces as the place to accomodate their social activities, such as wifi areas, plazas, parks, corridors, or others outdoor spaces. Characteristics outdoor spaces are more liveable and comfortable especially for informal student activities. They become favorite communal places for students. Direct interaction with the outdoor environment affects the quality of the space gained. Communal spaces at USU also host some of the areas that become the magnet of student activities.

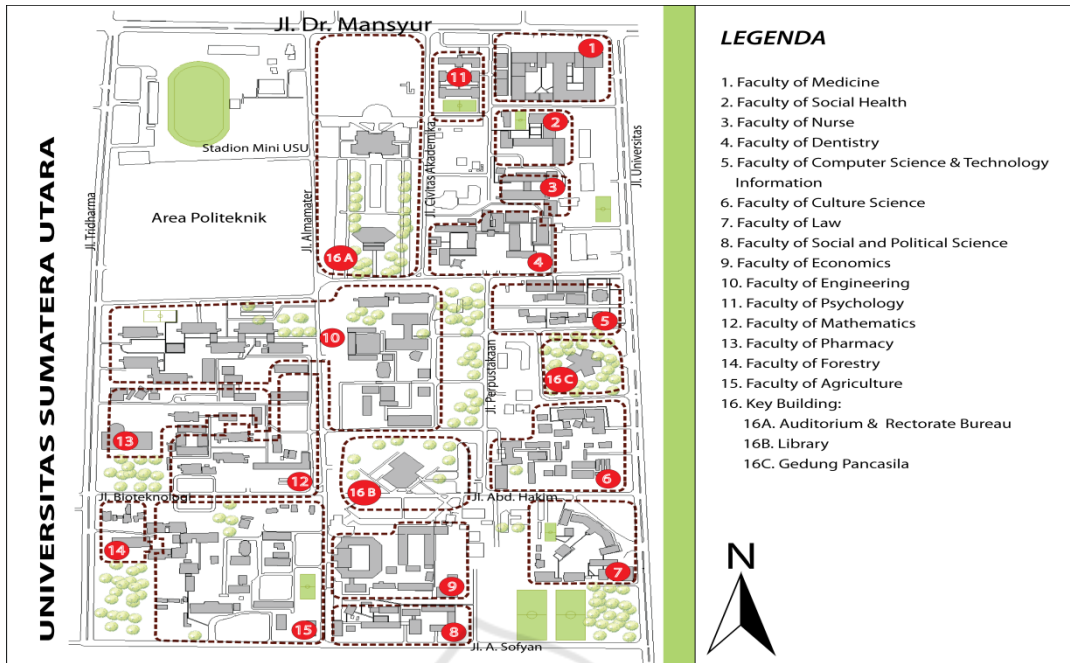
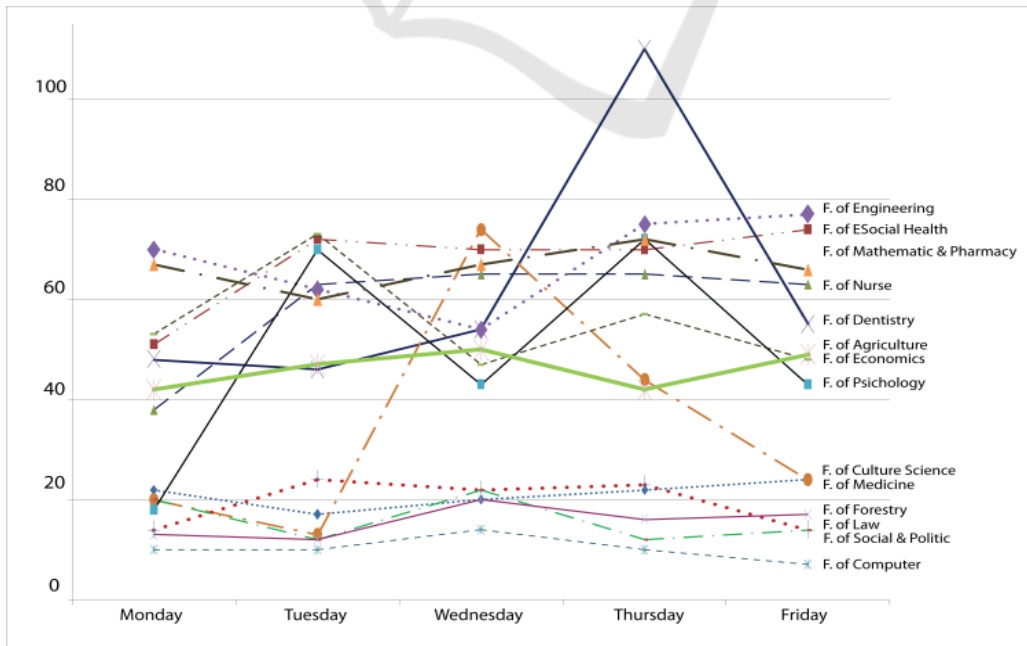


Figure 1 Map of Sectoral Spaces at University of Sumatera Utara

Each faculty provides representative communal spaces for their students. Spaces are designed near to the administrative buildings and the college buildings based on each departement. Students are easily to find and enjoy available outdoor communal spaces around them.

Each faculty provides representative communal spaces for their students. Spaces are designed near to the administrative buildings and the college buildings based on each departement. Students are easily to find and enjoy available outdoor communal spaces around them.

Diagram 1 Number of Students Using Outdoor Comunal Space each Faculty



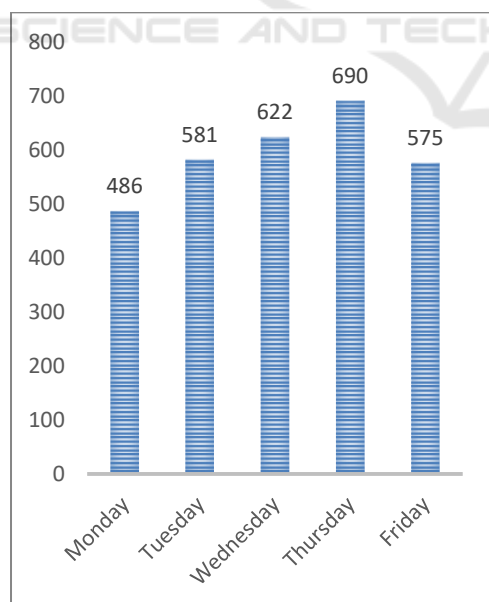
The research finds that some of students in some faculties are not interesting in outdoor space, some of them prefer in outdoor spaces. Students of Faculty of Cultural Science, Faculty of Engineering, and the Faculty of Agriculture prefer to gather in outdoor spaces. On the other hand, such as Faculty of Medicines and the Faculty of Computer and Technology Information students are prefer do interesting in indoor spaces (Diagram 1).

In the mean time students of Faculty of Social Health, Faculty of Nurse and the Faculty of Psychology also like interacting in outdoor spaces in corridors which can hold large amounts of student activities.

The factors that influences the preference outdoor communal spaces are comfortable, accessible factors and physical facilities. Convenient qualities are due to strategic location, near to the lecture rooms and connection with the wifi and availability of power chargers.

The highest daily usage of outdoor spaces by students on campus occurs on Thursday, while the lowest occurs on Monday. To that end, Thursday is the peak day the students are using outdoor space in USU campus and the very silent day is on Monday (Diagram 2).

Diagram 2: Usage of Outdoor Communal Space on Campus each day



4 CONCLUSIONS

USU campus is planned on the basis of cell concept. It creates the uniformity pattern of space in each faculty. Meanwhile, USU student preference to gather in outdoor spaces is very high. There are 91 points of outdoor spaces used by students which spread in 15 faculties. It is found in USU campus that thusday is the highest day of usage of outdoor communal spaces in a week. Students of Faculty of Dentistry is use the highest number of outdoor spaces in a day among 14 other faculties.

ACKNOWLEDGEMENTS

Authors are wishing to acknowledge assistance and encouragement from some people and organization in the created and improved of this paper. Thank to Research Institution University of Sumatera Utara that has been providing opportunities and funding over the smooth running of this research. Thank also to all those who have helped us in the process of research and the completion of this paper.

REFERENCES

- Astri Anindya Sari, eds. (2012). A Favorite Place of Students as a Restorative Facilities. *Journal of IPLBI* Vol.1, No.1, July 2012.
- Geoffrey N. Soutar, Julia P. Turner, (2002) "Students' preferences for university: a conjoint analysis", *International Journal of Educational Management*, Vol. 16 Issue: 1, pp.40-45
- Siagian, M., 2016. Social Space as People-Gathering Tool. *Procedia-Social and Behavioral Sciences*, 234, pp.265-270.
- Paul T, Ben Shneiderman. (2008). Community Response Grid (CRG) for a University Campus : Design Requirements and Implications. *Proceedings of the 5th International ISCRAM Conference- Washinton DC, USA, 2008*
- Simon Pia Pagaras, eds. (2015). *The Level of Physical Activity of University Students*. Elsevier, *Procedia Social and Behavioral Science*. Proceeding WCES-2015, Athens Greece.
- Walker Macy, Thomas Hacker. (2007). *Campus Design Guidelines University of California Riverside*. UC Riverside Capital & Phisical Planning, California.